

Consultation publique

08.06.23

5055 3^e avenue ouest

Modifications suite à l'activité de participation active

Avant

Après



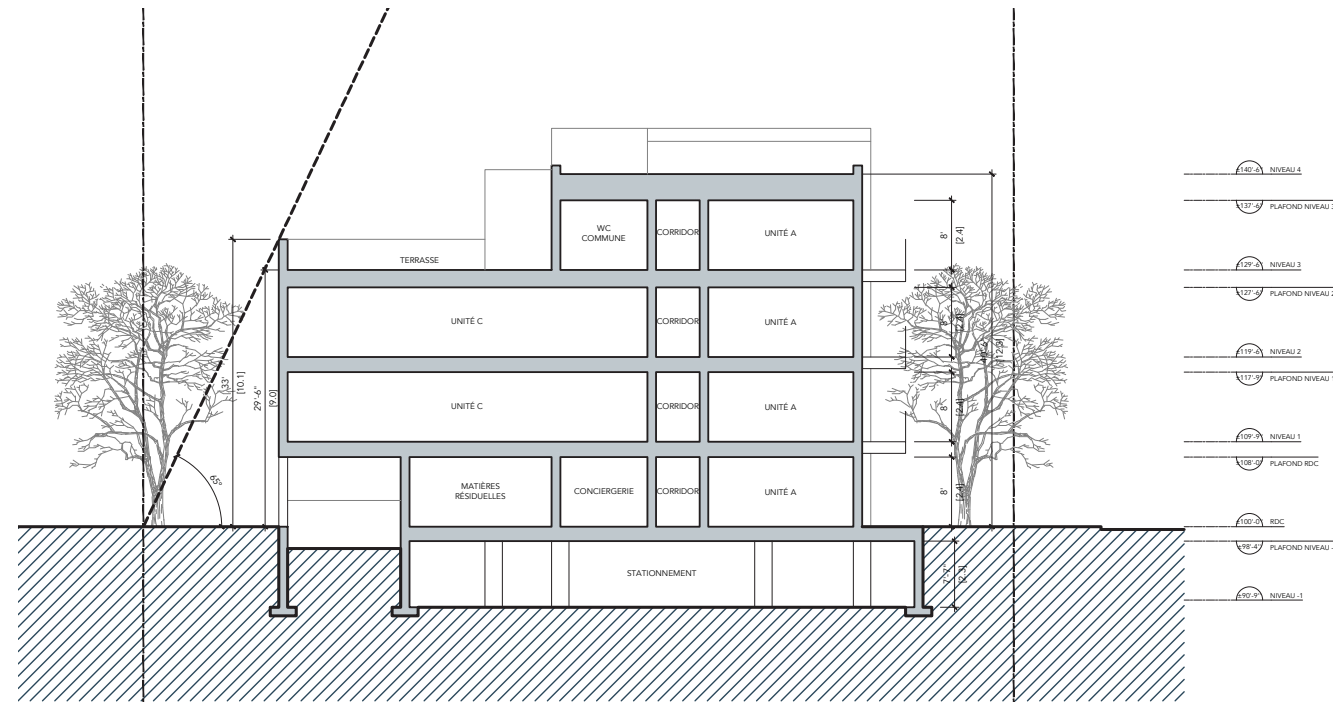
Réduction des terrasses au toit

Plantation d'érables champêtres pour minimiser les vues aériennes

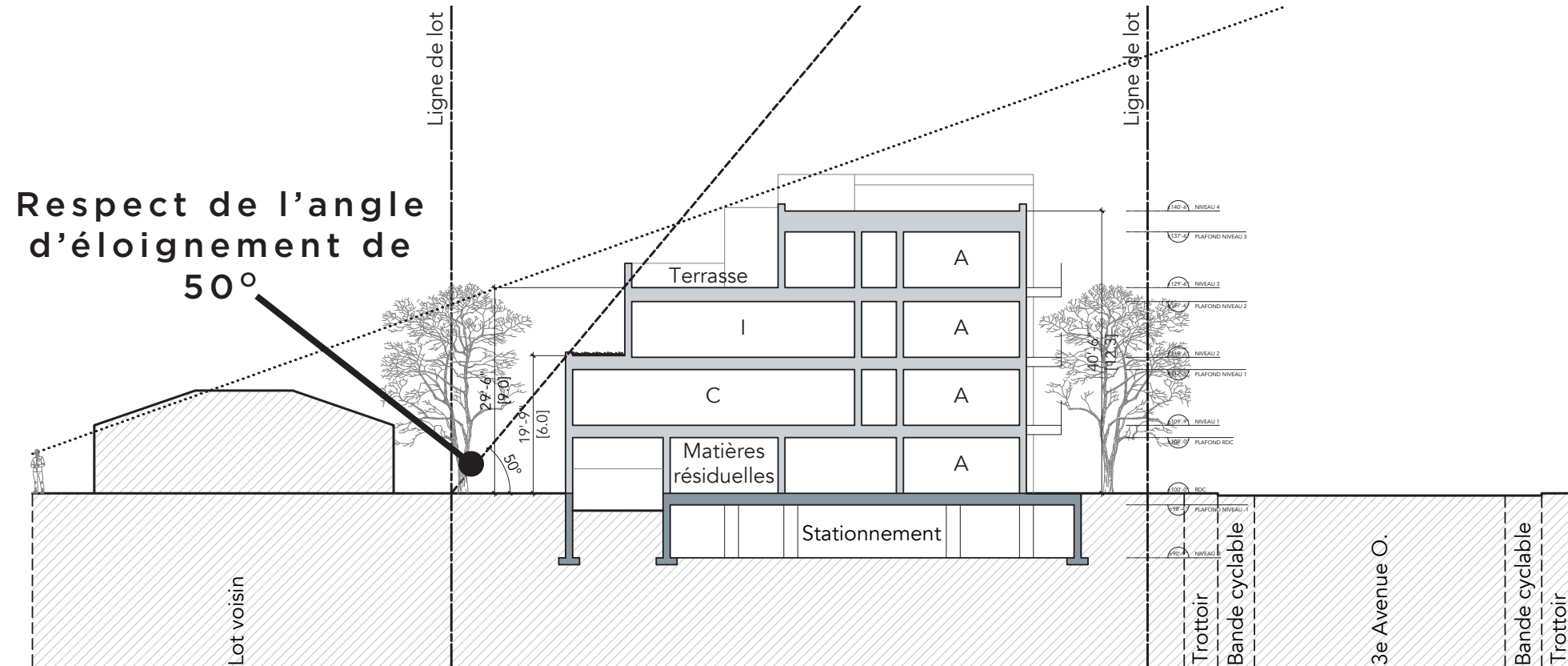


Modifications suite à l'activité de participation active

Avant



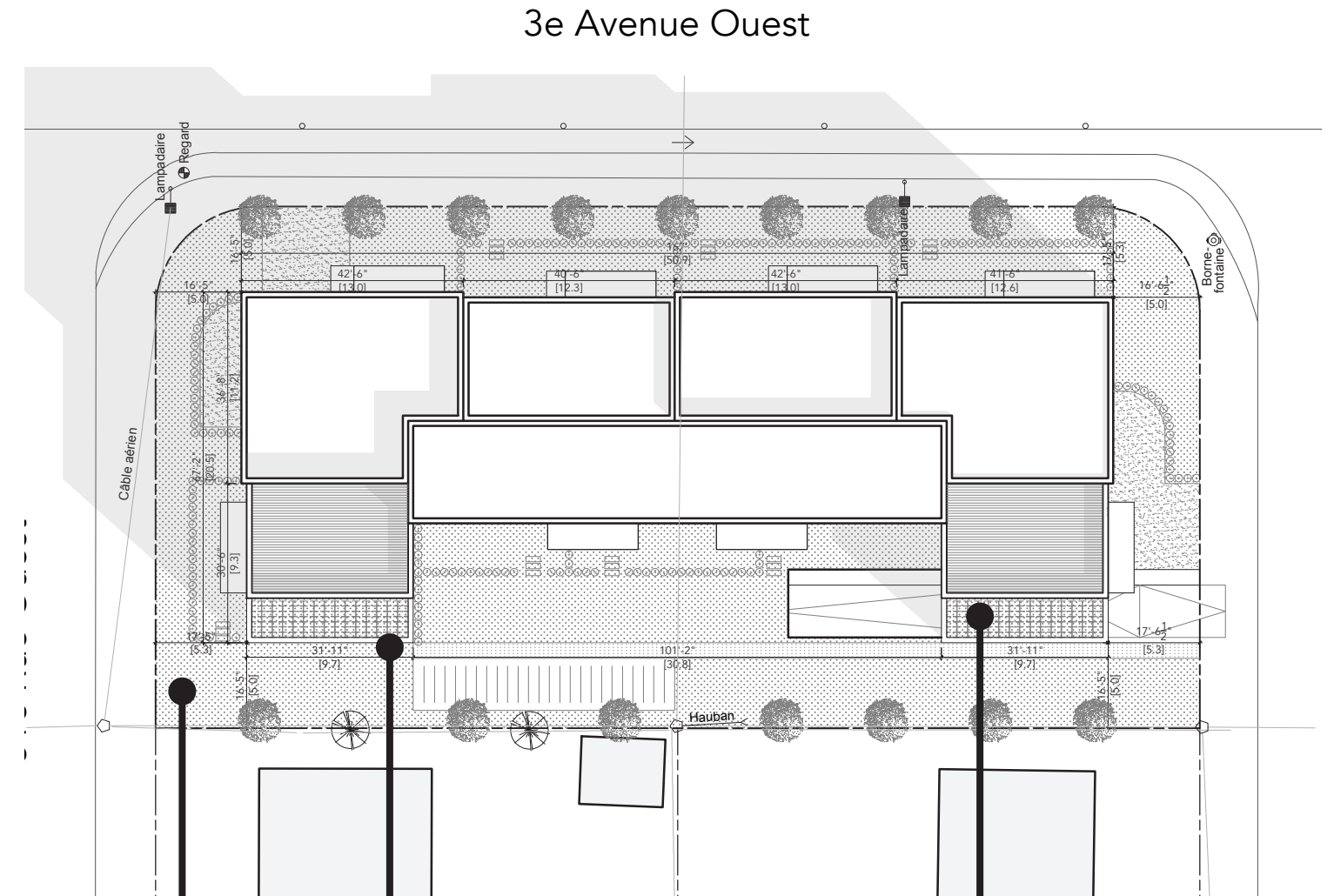
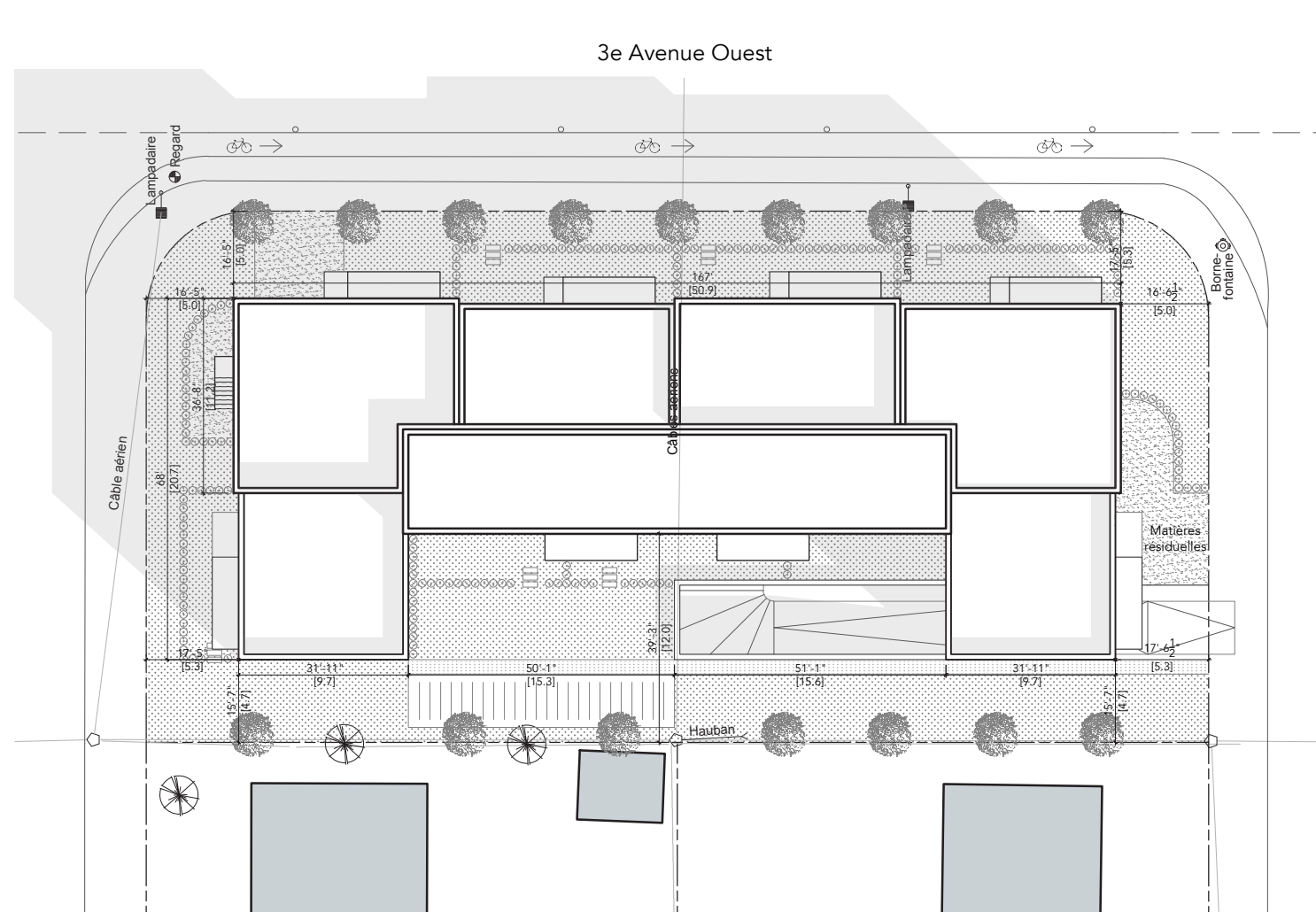
Après



Modifications suite à l'activité de participation active

Avant

Après

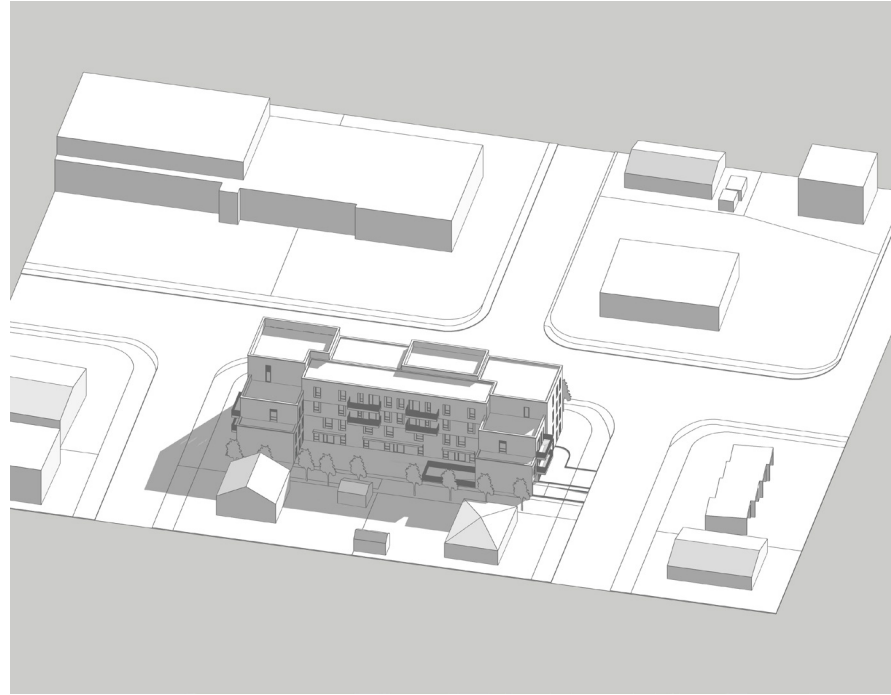


Retrait de la fenestration en marge latérale

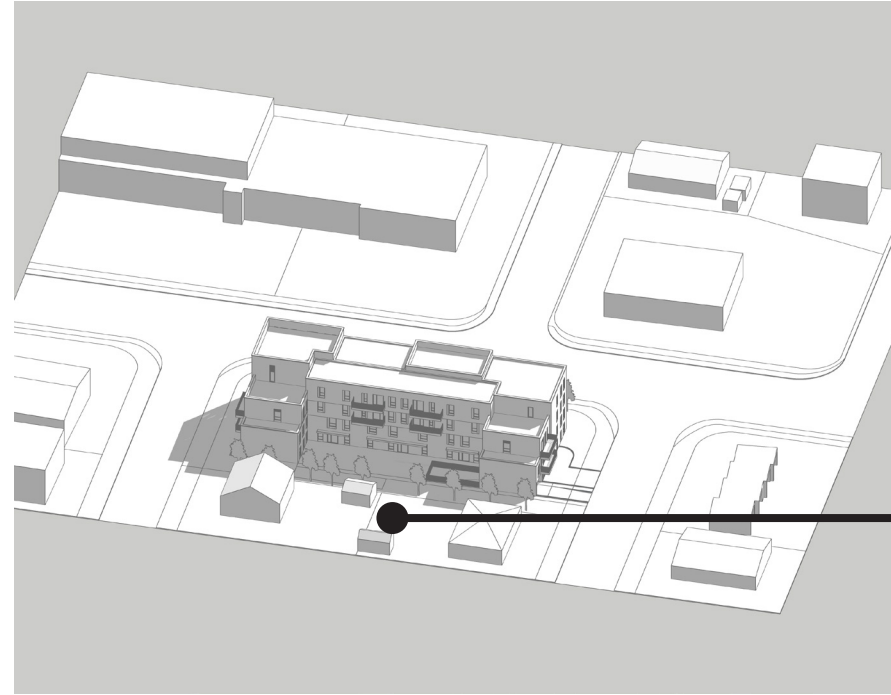
Toiture végétale non-accessible

Augmentation des marges latérales à 5m

Ensoleillement été

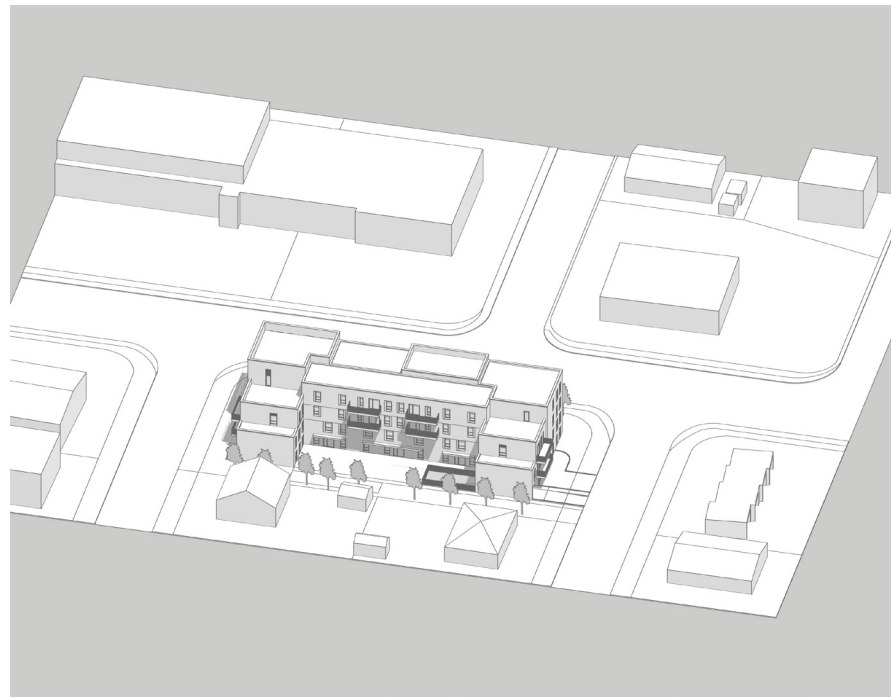


7h

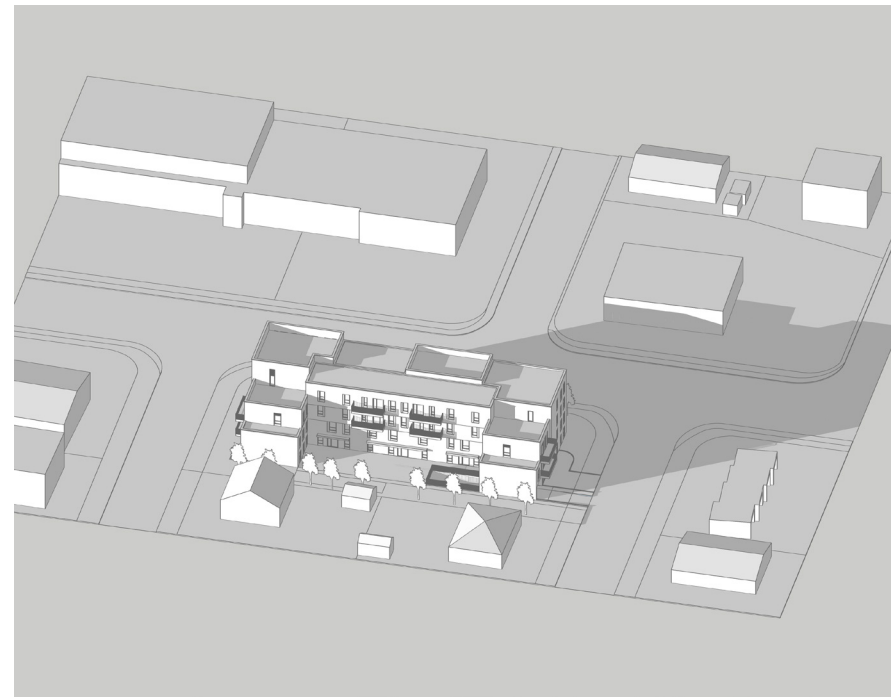


8h

Minimiser l'ombre portée sur les voisins arrière

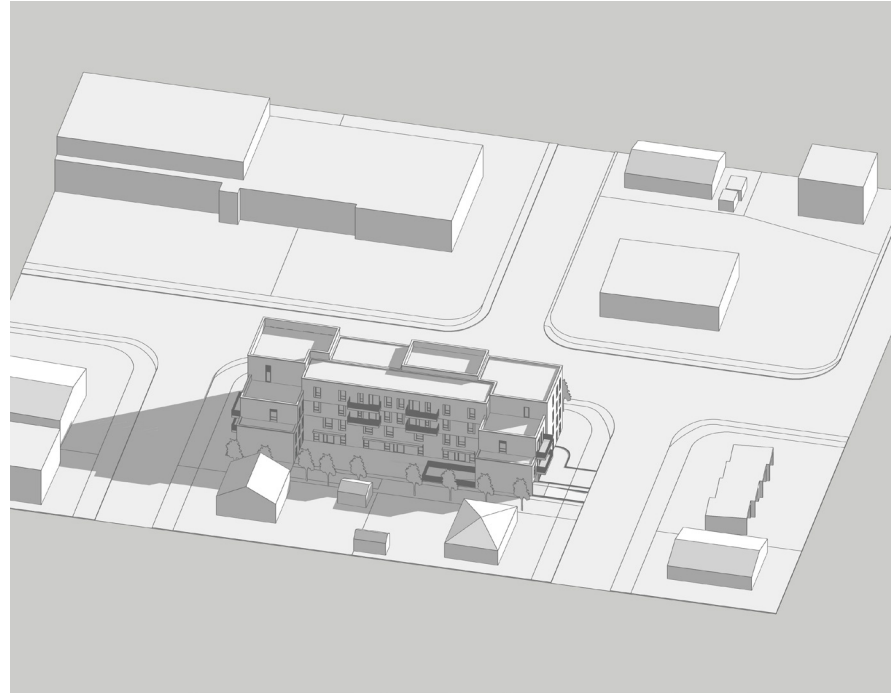


12h

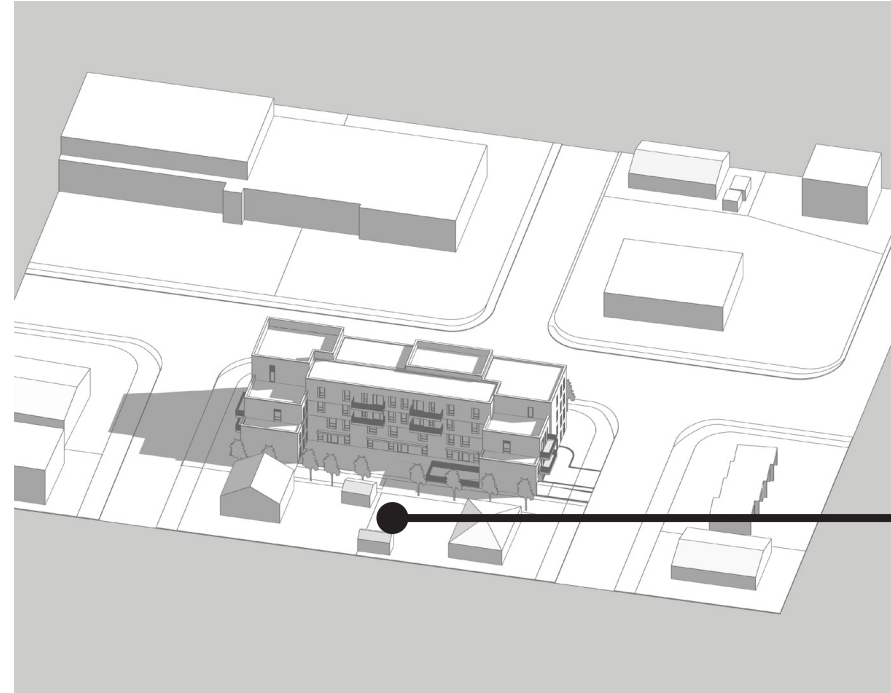


19h

Ensoleillement printemps/automne

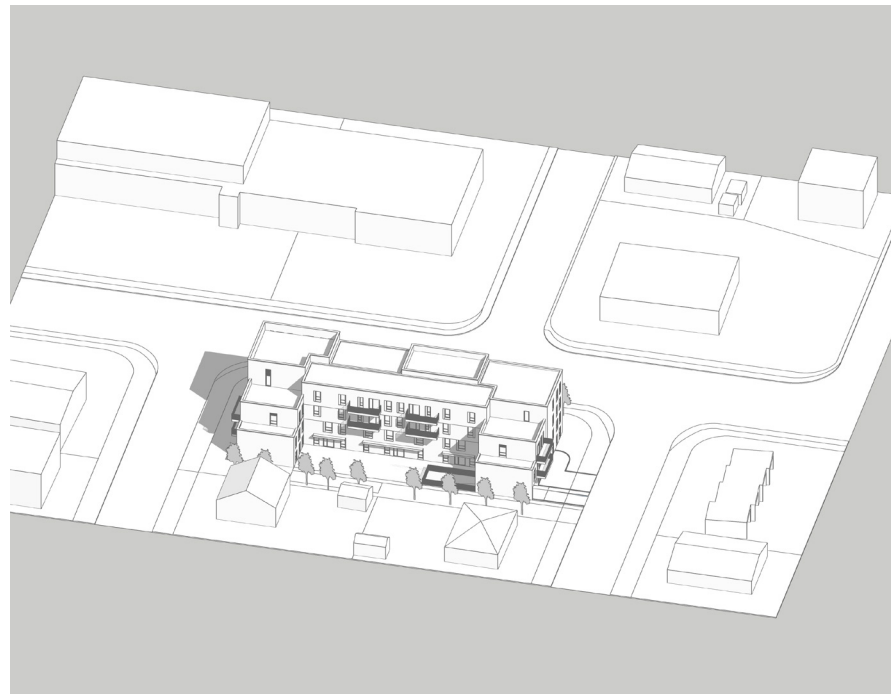


8h

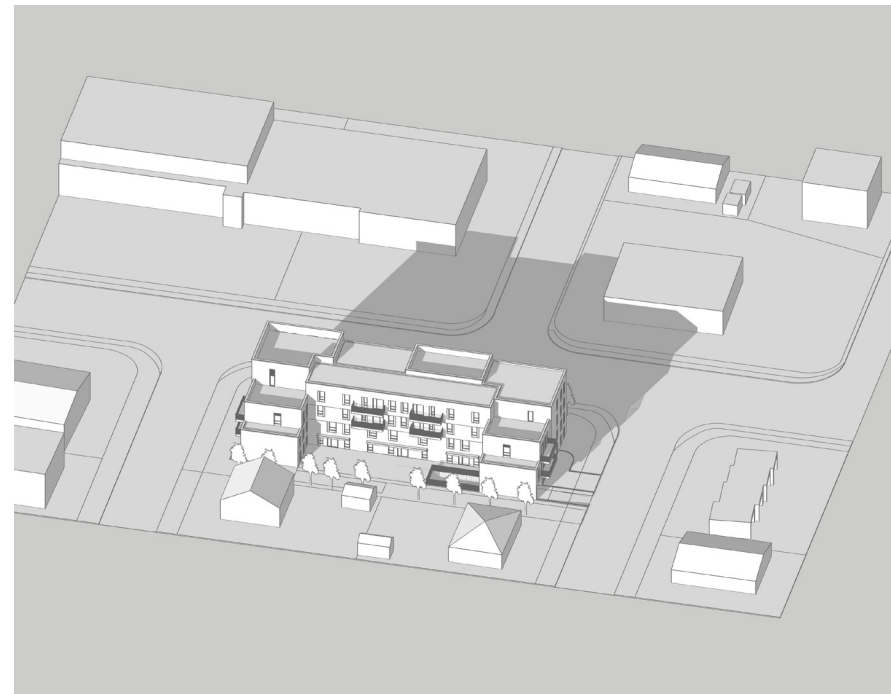


Minimiser l'ombre portée sur les voisins arrière

9h

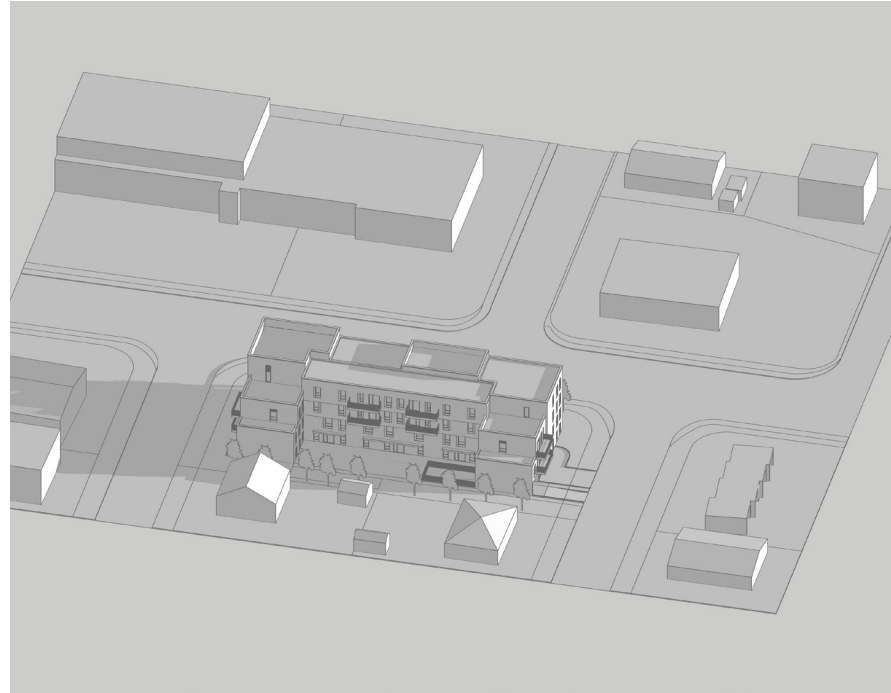


12h

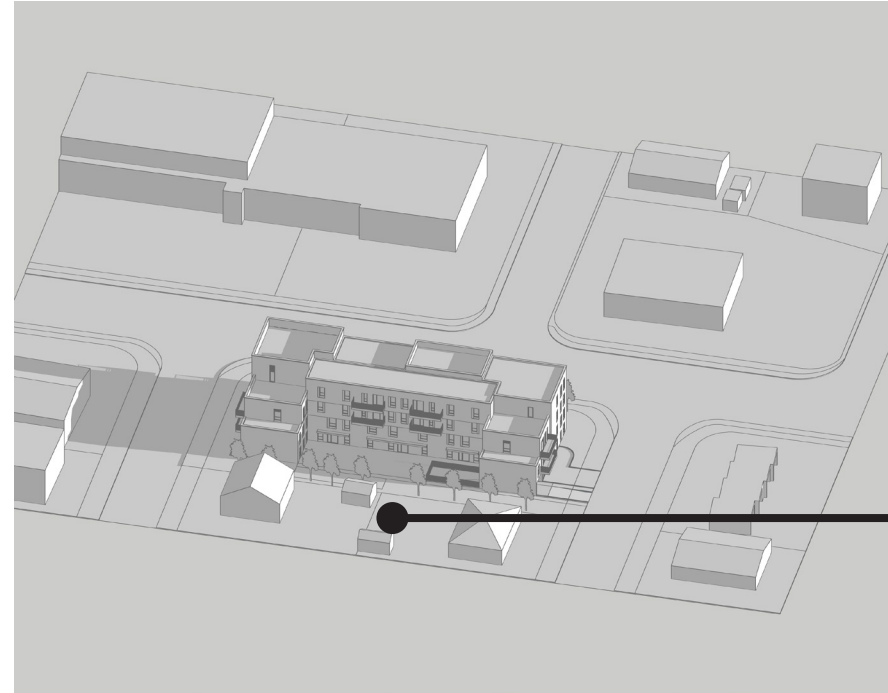


17h

Ensoleillement hiver

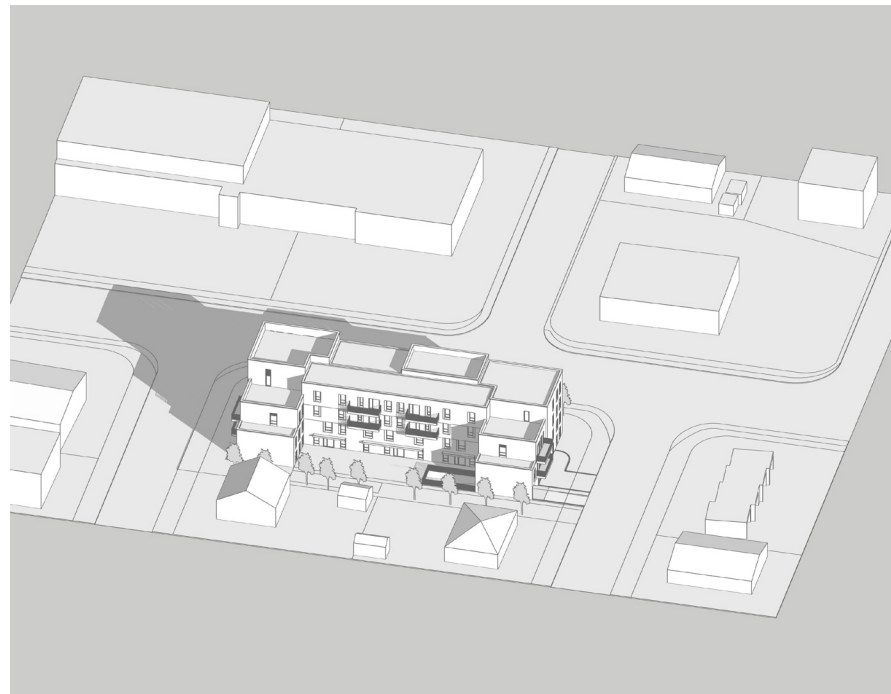


8h



9h

Minimiser l'ombre portée sur les voisins arrière



12h



15h

Sommaire

